



UNIVERSITY OF CAMBRIDGE INTERNATIONAL EXAMINATIONS
 General Certificate of Education
 Advanced Subsidiary Level and Advanced Level

CANDIDATE
 NAME

CENTRE
 NUMBER

--	--	--	--	--

CANDIDATE
 NUMBER

--	--	--	--



BIOLOGY

9700/31

Advanced Practical Skills 1

October/November 2012

2 hours

Candidates answer on the Question Paper.

Additional Materials: As listed in the Confidential Instructions.

READ THESE INSTRUCTIONS FIRST

Write your Centre number, candidate number and name on all the work you hand in.

Write in dark blue or black ink.

You may use a pencil for any diagrams, graphs or rough working.

Do **not** use red ink, staples, paper clips, highlighters, glue or correction fluid.

DO NOT WRITE IN ANY BARCODES.

Answer **all** questions.

You may lose marks if you do not show your working or if you do not use appropriate units.

At the end of the examination, fasten all your work securely together.

The number of marks is given in brackets [] at the end of each question or part question.

For Examiner's Use	
1	
2	
Total	

This document consists of **12** printed pages.



You are reminded that you have **only one hour** for each question in the practical examination.

You should:

- read carefully through **the whole** of Question 1 and Question 2
- then plan your use of **the time** to make sure that you finish all the work that you would like to do.

You will **gain marks** for recording your results according to the instructions.

- 1 You are required to investigate how much glucose diffuses from a plant tissue extract through a partially permeable wall of Visking (dialysis) tubing.

Fig. 1.1 shows the apparatus you will set up for this investigation.

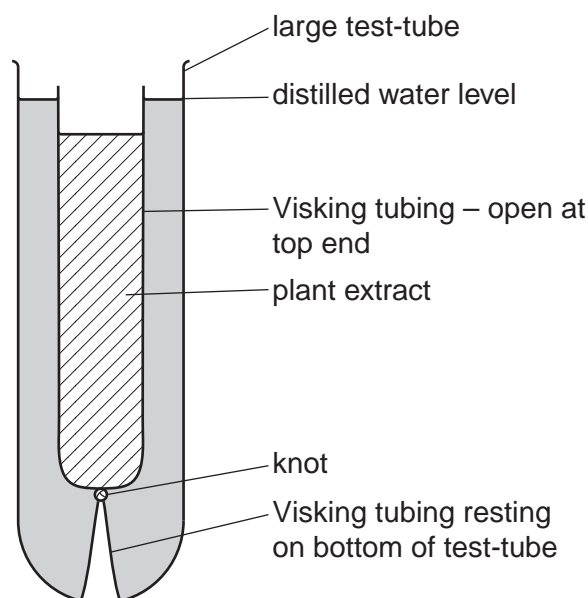


Fig. 1.1

You are provided with:

labelled	contents	hazard	volume /cm ³
P	plant tissue extract	none	20
W	distilled water	none	100
G	1% glucose solution	none	25
Benedict's solution	Benedict's solution	harmful irritant	30

labelled	contents	hazard	details	quantity
V	Visking tubing in distilled water	none	15 cm length in distilled water	1

Proceed as follows:

For
Examiner's
Use

1. Tie a knot in the Visking tubing as close as possible to one end so that it seals the end.
2. To open the other end, wet the Visking tubing and rub the tubing gently between your fingers.
3. Without mixing **P**, put some of **P** into the Visking tubing to the level shown in Fig.1.1.
4. Rinse the outside of the Visking tubing by dipping it into the water in the container labelled **V**.
5. Put the Visking tubing into the large test-tube.

(a) (i) State the volume of **W** needed to reach the water level as shown in Fig.1.1.

volume of **W** cm³ [1]

6. Put the volume of **W**, as decided in **(a)(i)**, into the large test-tube.
7. Put the large test-tube with the Visking tubing into a test-tube rack and leave for 20 minutes.

During the 20 minutes:

- set up a boiling water-bath ready for step 11
- make a serial dilution of 1% solution **G** which reduces the concentration of **G** by **half** between each successive dilution.

You will need to make up 20 cm³ of each concentration of solution **G**.

(ii) Complete Fig.1.2 to show how you will make **four** further concentrations of **G**, starting with the 1% solution, **G**.

For
Examiner's
Use

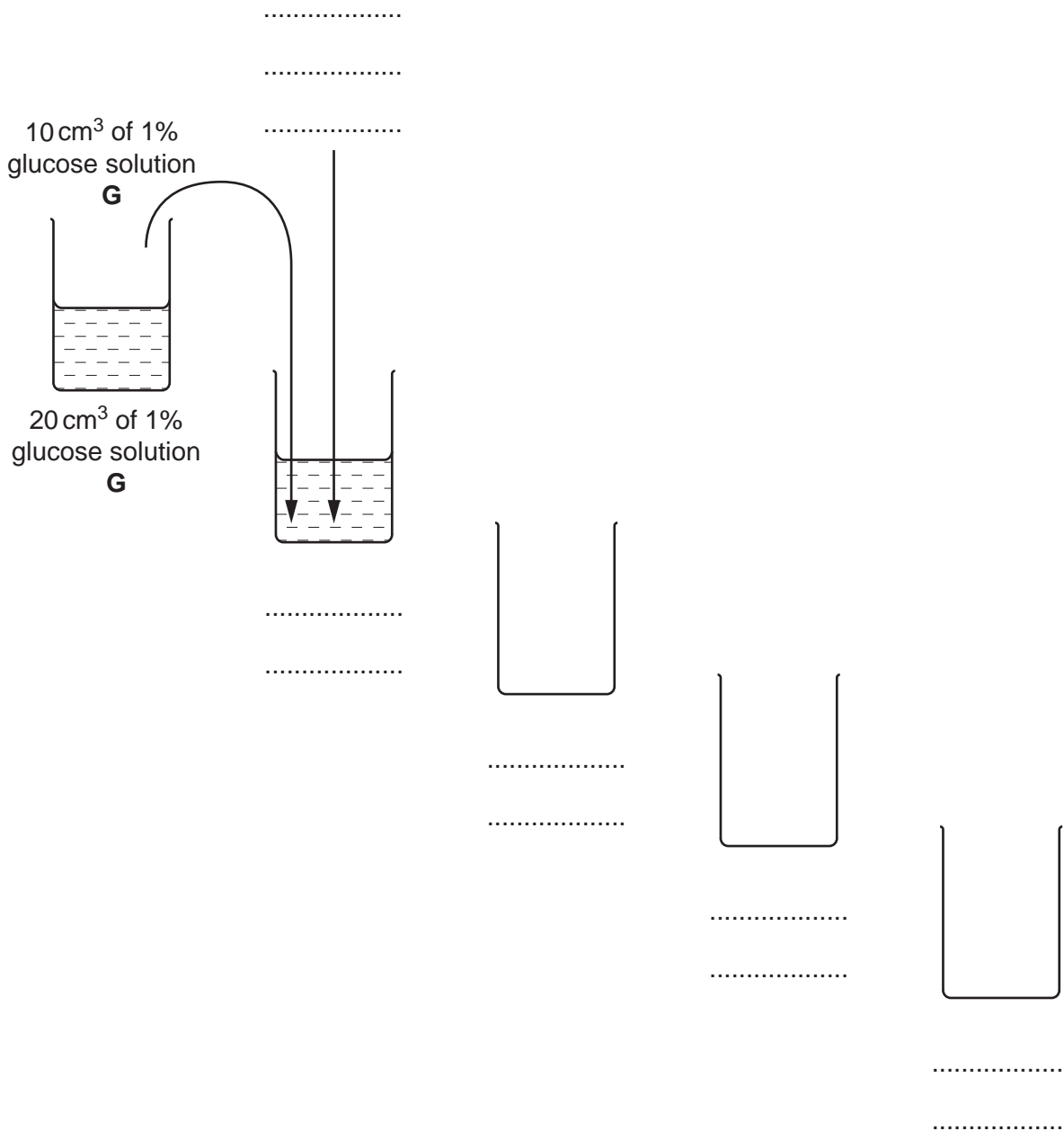


Fig. 1.2

[3]

8. Prepare the concentrations of **G** as decided in (a)(ii) in the containers provided.
9. After 20 minutes, which started at step 7, remove the Visking tubing and put it into the container labelled 'for waste'.
10. Pour the water from the large test-tube into a container and label it **S**.
11. Carry out the Benedict's test on all 6 solutions (five of **G** and one of **S**).

You will need to use 2 cm³ of each of the solutions of **G** and **S** with 2 cm³ of Benedict's solution.

5

12. Test each solution separately and record the time taken for the first appearance of any colour change. If there is no colour change after 120 seconds record 'more than 120'.

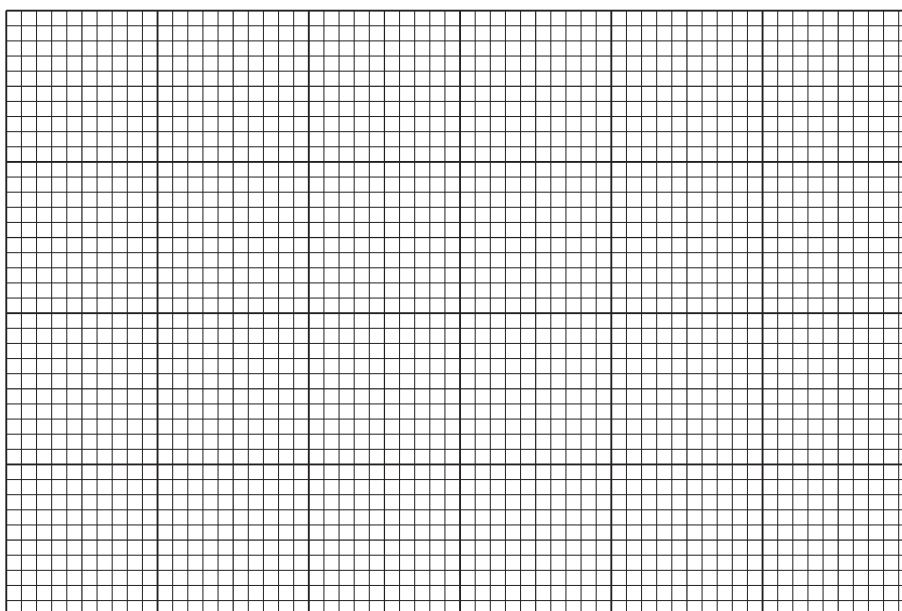
*For
Examiner's
Use*

(iii) Prepare the space below and record your results.

[4]

(b) (i) Plot a graph of the data shown in Table 1.1.

For
Examiner's
Use



[4]

(ii) Explain the difference in the results for the glucose concentration at 10 arbitrary units and at 15 arbitrary units.

.....

 [1]

(iii) Explain the difference in the gradients of the line between the glucose concentrations of 10 arbitrary units and 25 arbitrary units **and** between 25 arbitrary units and 30 arbitrary units.

.....

 [1]

(iv) The student used a measuring cylinder to measure the volumes of glucose solution. The smallest division on the measuring cylinder scale was 0.2 cm³.

State the actual error in measuring a volume of 5 cm³ using this measuring cylinder.

5 cm³ ± cm³ [1]

[Total: 20]

2 **J1** is a slide of a transverse section through a plant root.

For
Examiner's
Use

(a) (i) Describe one observable feature on **J1** which identifies this specimen as a root.

.....
.....[1]

(ii) Draw a large plan diagram of the whole specimen on **J1**.

On your diagram, use a label line and label to show the cortex.

[4]

- (iii) Make a large drawing of one group of four complete touching xylem vessels as observed on the specimen on **J1**.

On your drawing, use a label line and label to show one lumen.

Annotate your drawing with one observable feature.

*For
Examiner's
Use*

[5]

Fig. 2.1 shows a diagram of a stage micrometer scale that is being used to calibrate an eyepiece graticule.

For
Examiner's
Use

One division, on either the stage micrometer scale or the eyepiece graticule, is the distance between two adjacent lines.

The length of one division on this stage micrometer is **0.1 mm**.

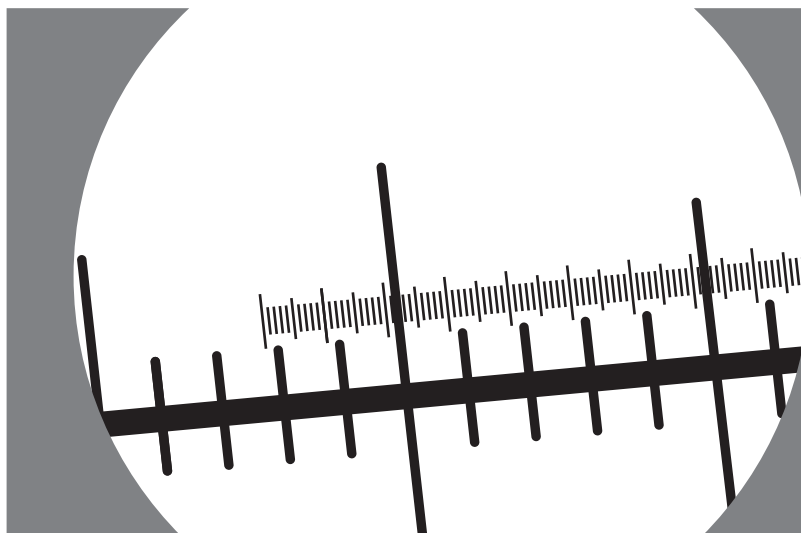


Fig. 2.1

(b) (i) Using this stage micrometer, where one division is **0.1 mm**, calculate the actual length of one eyepiece graticule unit using Fig. 2.1 by completing Fig. 2.2.

Step 1

1 eyepiece graticule unit = divided by = mm

Step 2

Convert the answer to a measurement with the unit most suitable for use in light microscopy.

multiplied by =

Fig. 2.2

[3]

Fig. 2.3 is a photomicrograph showing part of an organ from a plant of a different species.

For
Examiner's
Use

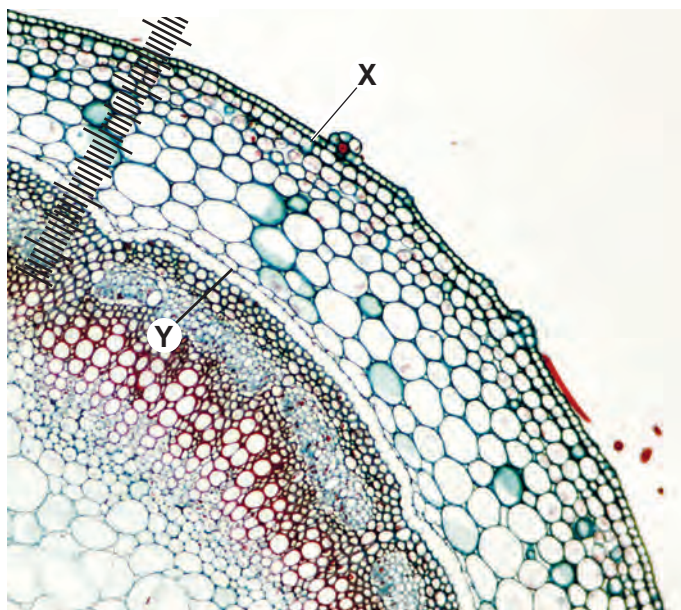


Fig. 2.3

- (ii) Fig. 2.3 shows a photomicrograph taken using the same microscope with the same lenses as Fig. 2.1.

Use the calibration of the eyepiece graticule unit from **(b)(i)** and Fig. 2.3 to calculate the actual length of the plant tissue from **X** to **Y**.

You will lose marks if you do not show all the steps in your calculation and do not use the appropriate units.

[2]

Question 2 continues on page 12.

Fig 2.3 is shown again here to help you answer (c).

For
Examiner's
Use

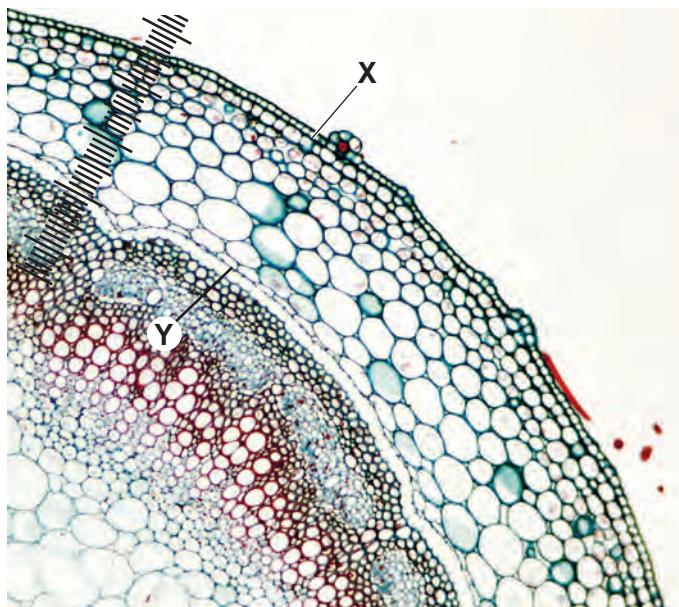


Fig. 2.3

- (c) Prepare the space below so that it is suitable for you to record observable differences between the specimen on slide **J1** and in Fig. 2.3, to include:
- the vascular tissue
 - at least two other tissues.

[5]

[Total: 20]

Permission to reproduce items where third-party owned material protected by copyright is included has been sought and cleared where possible. Every reasonable effort has been made by the publisher (UCLES) to trace copyright holders, but if any items requiring clearance have unwittingly been included, the publisher will be pleased to make amends at the earliest possible opportunity.

University of Cambridge International Examinations is part of the Cambridge Assessment Group. Cambridge Assessment is the brand name of University of Cambridge Local Examinations Syndicate (UCLES), which is itself a department of the University of Cambridge.